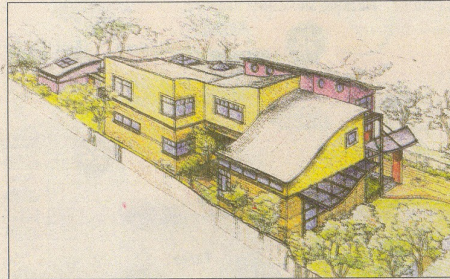


A cut-out above the rest

ARCHITECTS' CHALLENGE

PART 1

MANY people have some idea of their ideal house, but what would an architect's dream home look like? For *The Sun-Herald*, Archicentre asked four Sydney family home. Here, Lalit Mital of Dynamic Design Solutions, West Ryde, presents his vision.



STEEL AND SPACE: Living areas face north with courtyards featuring prominently.

"LARGE spaces, enclosed with floating, curved and undulating roof surfaces have always inspired me," Lalit Mital said. "That's how I started to conceive my dream home."

He opted for two storeys but wanted to avoid a problem common to two-storey houses.

"They tend to get divided into two specific zones," he said. "Once you are upstairs you lose contact with the lower floor."

"So I have created links through various cut-outs throughout the house. These not only connect the two floors but provide light, ventilation and, most importantly, a visual link between the floors."

"All the spaces are designed with a north-easterly aspect. The fact that the house faces west - towards the

street - and the deep block of land provide a perfect opportunity to have all the living spaces facing north, while the passages are located towards the south."

"The formal living room has a high, curved ceiling with plenty of light from the north, with a glimpse of a landscaped courtyard. The front windows - facing west - are shaded from the afternoon sun by louvres above."

A recessed dining room has a view of a central courtyard, with northern light from a large window. The kitchen, too, has courtyard views.

The family room faces east into a rear courtyard and has a cut-out that links it with the upper floor and lets in light from a skylight.

A spiral staircase from the family

room is flooded with natural light through a circular skylight above the stairwell.

Upstairs, the master bedroom faces east, with a balcony overlooking the rear courtyard.

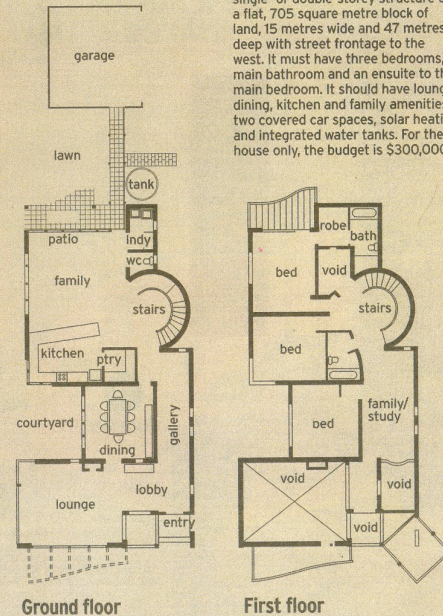
The walls are brick veneer with rendered surfaces in textured paint.

The entrance awning, front louvres and terrace balustrade are steel. The curved, undulating roofs are metal and designed to direct rainwater into storage tanks behind the laundry. The water is recycled for the garden.

■ To find an architect to suit your needs, contact Archicentre, the home advisory service of the Royal Australian Institute of Architects, on 1300 134 513 or visit www.archicentre.com.au. Part two will appear next week.

THE BRIEF

The house should be a contemporary single- or double-storey structure on a flat, 705 square metre block of land, 15 metres wide and 47 metres deep with street frontage to the west. It must have three bedrooms, a main bathroom and an ensuite to the main bedroom. It should have lounge, dining, kitchen and family amenities, two covered car spaces, solar heating and integrated water tanks. For the house only, the budget is \$300,000.



Ground floor

First floor